

GRATEMATE rope protector

MR63

GRN Reinforced nylon rope protector for metal or composite grating walkways

Features:

- Provides protection for 2 ropes in separate apertures (13mm max)
- Tough reinforced construction
- Fits a wide range of grating sizes
- 4 Points for attachment
- 2 karabiner holes for transportation
- Recessed area for unique ID number

Separate rope apertures to reduce the risk of rope damage from rope on rope contact.

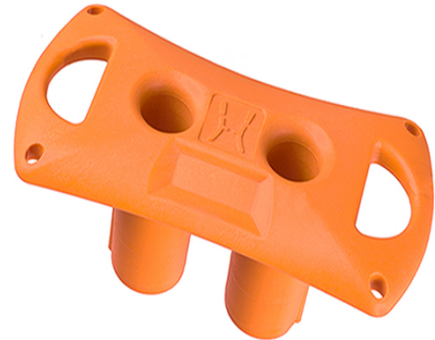
GRN Plastic (glass reinforced nylon) construction gives unrivalled strength and durability in use whilst remaining lightweight.

2 separate rope tubes spaced apart with maximum outer diameter of 24mm allow the Gratemate to fit in to a wide range of grating sizes.

4 cord attachment points to secure Gratemate, giving a large range of tie down options. NB Cord not included.

2 karabiner holes allow the Gratemate to be transported easily on harness gear loops or stacked together for storage.

Pre-formed recess area for addition of unique ID number.



Specifications:

NB: specifications and colour may change without notice.

Size:	13mm max. rope dia. x 2
EN Test Mass:	N/A
Loading:	N/A
Conformity:	non PPE
Materials:	Nylon (glass reinforced)
Weight (kg):	0.07
Industries:	rope access

All our PPE, rescue and lifting equipment have both UKCA and CE conformity where applicable

heightec - designing and manufacturing innovative products for specialist height safety and rescue since 1997

sales support: admin@heightec.com

heightec.com

PDS1323

26/03/25